



Peaksider Property  
Management

# Chesa Goodmountain

Samedan

## Facts

---

- Sleeps: up to 10 guests
- Bedrooms: 5
- Bathrooms: 5

## Services

---

- Dedicated concierge for pre-arrival & on-spot arrangements
- Daily cleaning
- All linen, WiFi and utilities
- Welcome ceremony & fresh flowers at arrival





## Description

---

Perched on the sun-drenched hillside above the charming village of Samedan, Chesa Goodmountain is an exquisite five-bedroom chalet that seamlessly combines traditional Alpine charm with contemporary elegance.

Spanning four spacious floors, this luxurious retreat offers breathtaking mountain views and exceptional comfort throughout.

The chalet features a magnificent master suite on the top floor, complete with a private en-suite bathroom and a stunning free-standing bathtub: the perfect place to unwind after a day in the mountains.

Three beautifully appointed double bedrooms occupy the second floor, each with its own bathroom, ensuring complete privacy and comfort for every guest. A fourth double bedroom, also with an en-suite, is conveniently located alongside the expansive living area on the third floor.

The heart of Chesa Goodmountain lies in its inviting open-plan living space, where floor-to-ceiling windows fill the room with natural light. The elegant lounge, modern kitchen, and spacious dining area create a perfect setting for relaxed gatherings or sophisticated entertaining.

After a day on the slopes, guests can retreat to the chalet's private spa: a sanctuary of tranquility featuring a sauna, jacuzzi, and steam room.



## Location

---

Chesa Goodmountain is nestled on a hillside overlooking the picturesque mountain village of Samedan. In the heart of the village, traditional rows of houses adorned with intricate Sgraffito create charming, postcard-perfect scenes.

The nearby Survih ski lift offers gentle slopes ideal for children and beginners, while the renowned Corviglia ski area lies just 4 km away. Other ski destinations, including Corvatsch and Diavolezza-Lagalb, are also easily and quickly accessible.

For those seeking a slower pace, the cross-country skiing center invites visitors to explore tranquil and scenic trails. Muottas Muragl offers exceptional hiking routes with breathtaking panoramic views, making it a true highlight for nature lovers.

The world-famous St. Moritz, with its exclusive boutiques, fine dining, and vibrant lifestyle, is only 7 km away and can be reached within minutes.

Samedan is also home to Europe's highest-altitude airport, which accommodates private jets and serves as the departure point for spectacular sightseeing flights over the Engadine's majestic mountain landscape.

For international travelers, Zurich Airport is approximately 215 km (about 3 hours by car) from Samedan, while Milan Malpensa Airport is around 180 km (about 3 hours and 15 minutes by car) away.





## Layout

---

### Level 1:

Spacious garage with dedicated ski storage area  
Lower-level entrance with cloakroom

### Level 2:

Entrance hall and welcoming foyer  
Bedroom 1 with private bathroom and lounge area  
Bedroom 2 with private bathroom and lounge area  
Bedroom 3 with en-suite bathroom, walk-in wardrobe, and lounge area  
Spa area featuring a jacuzzi, steam room, and sauna  
All rooms have direct garden access

### Level 3:

Expansive living room with wood-burning fireplace  
Cozy dining area  
Access to south-facing terrace  
Fully equipped kitchen  
Bedroom 4 with en-suite bathroom

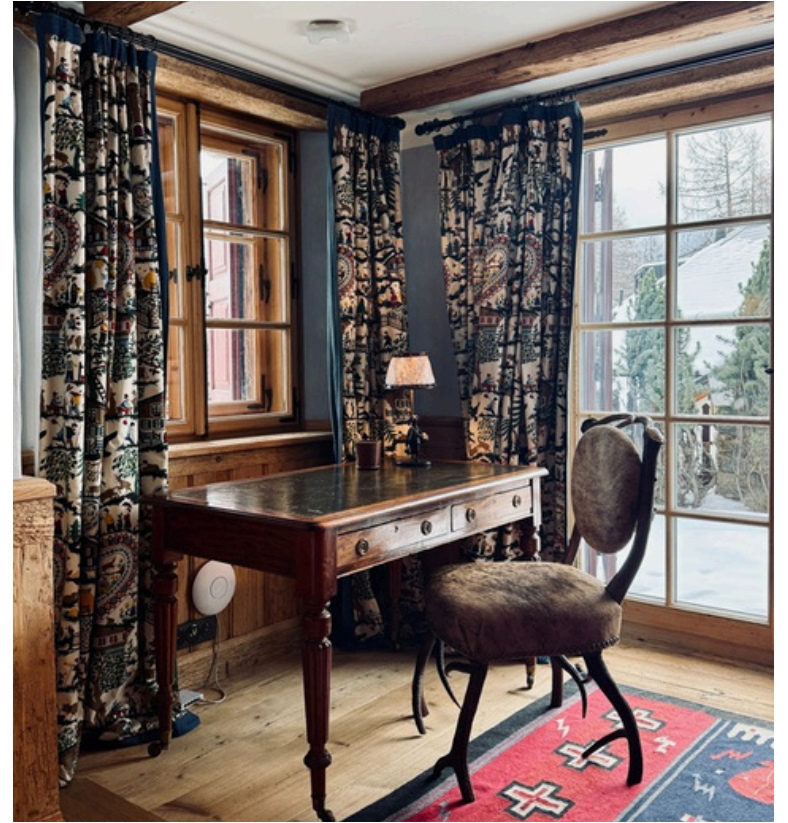
### Level 4:

Master suite with en-suite bathroom, freestanding stone bathtub, balconies, and walk-in closet  
Private office

## Virtual tour

---

<https://my.matterport.com/show/?m=toixVklGVzU>





enjoy the valley  
we take care of the rest

**Booking Contact**

PPM exclusive Services GmbH  
Via dal Bagn 22  
7500 St. Moritz  
Switzerland

Office Phone: +41 81 833 02 02  
E-Mail: [booking@ppmstmoritz.com](mailto:booking@ppmstmoritz.com)  
[www.ppmstmoritz.com](http://www.ppmstmoritz.com)



@ppmstmoritz