



Peakside Property
Management

Chesa Laret

Pontresina / St. Moritz

Facts

- Sleeps: up to 12 adults & 2 children
- Bedrooms: 6 + 1
- Bathrooms: 6

Services

- Private chef*
- Chalet host*
- Concierge service
- Daily cleaning
- All linen and utilities

*

For winter rentals: chef and host services are included in the rental fee (8 hours per day).

For summer rentals: chef and host can be arranged upon request.





Description

Discover Chesa Laret, beautifully renovated traditional Engadin house, perfect for families and friends seeking a serene yet vibrant ski holiday escape.

Located just 6 km from St. Moritz, this unique property features 2 master suites, 4 double bedrooms, 1 kids bedroom and plenty of cozy spaces to relax and entertain. The soothing scent of woodwork fills the chalet, creating a warm and inviting atmosphere throughout. Enjoy a billiard table, TV lounge, table tennis, a luxurious spa with a steam bath, sauna, and fitness area.

Surrounded by cross-country skiing trails, forest walks, nearby “home” ski area Languard and the tobogganning Muottas Muragl, the chalet offers access to both adventure and relaxation. Its peaceful village setting boasts great restaurants, while St. Moritz’s Corviglia ski lifts are just a short drive away.

Inside, a warm wooden ambiance complements every detail, from the billiard hall and traditional Stuva with an oven to the elegant living spaces and multiple balconies with panoramic mountain views. With elevator access across 4 floors, a ski room, and outdoor lounge, this home is a perfect blend of tradition and modern luxury.

Click [here](#) to visit Chesa Laret virtually.

Location

Chesa Laret lies centrally in the idyllic mountain village of Pontresina, with its splendid Engadine houses, Belle Epoque hotels, cosy central street, flanked by the Bernina massif. The residents and guests enjoy the complete peace and homely atmosphere of the village as well as own ski area of Languard. The world famous St. Moritz, with diverse shopping opportunities & restaurants is only a few minutes away and the Corviglia skiing area is reachable via Celerina ski cabins that are just 7 minutes drive away. The Grand Hotel Kronenhof, neighboring Chesa Laret, is home to a beautiful swimming pool that accepts external guests upon request.

- **Location:** Pontresina
- **Altitude:** 1805m
- **St. Moritz center:** 6 km
- **Airport Samedan:** 6 km
- **Airport Zurich:** 220 km
- **Airport Milan:** 190 km

Facilities

- Spa area with steam bath, sauna
- Ski & Bike room
- Fitness area
- Wi-Fi
- Fireplace
- Table tennis & games lounge
- Garage parkings for 4 cars





Layout

Floor 1:

Garage level entrance
Fully equipped ski & bike room
Laundry room
Guests WC
Games room with bar, wine fridges, table football and table tennis

Floor 2:

Access to garden with outdoor lounge and mountain views
Spa with sauna, steam room, shower, relax area and fitness room
Bedroom N1: master suite with lounge, kitchenette, walk-in closet, shower room and separate WC, freestanding bathtub and balcony access

Floor 3:

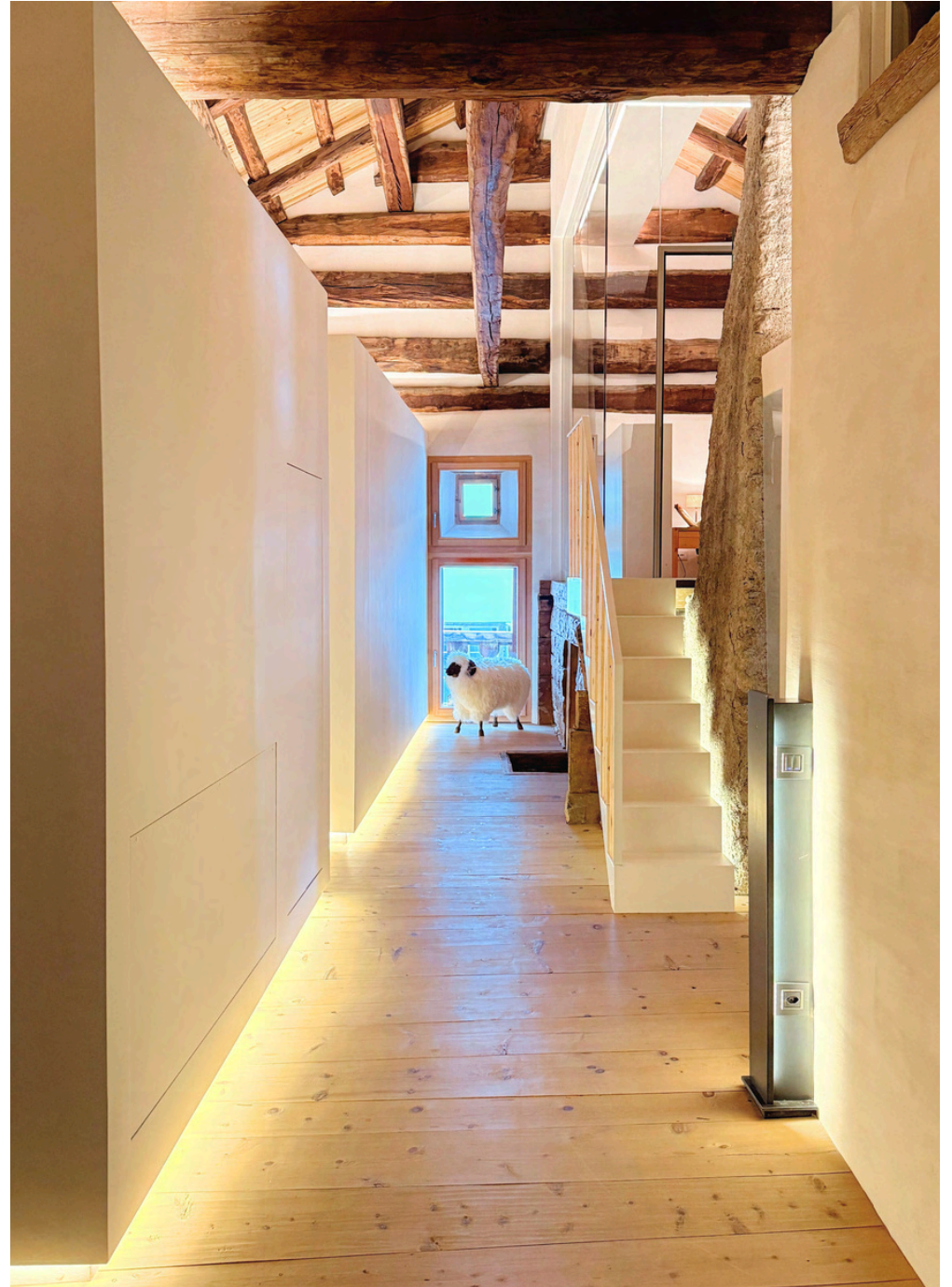
Main entrance
Large living and dining area, with fireplace, access to balcony and TV lounge
Billiard hall with guest bathroom
Stube with a stove
Unique historic smoke room with a Berkel slicer
Fully equipped kitchen

Floor 4:

TV lounge
Bedroom N2: double with own bathroom
Bedroom N3: double, shares shower room with Bedroom N5
Bedroom N4: double, with freestanding bathtub and own shower room

Floor 5:

Bedroom N5: double, with kitchenette, shares shower room with Bedroom N3
Bedroom N6: kids twin bedroom, shares bath facilities with Bedroom N7
Bedroom N7: master suite, with walk-in closet, fireplace, shower, freestanding bathtub, separate WC









enjoy the valley
we take care of the rest

Booking Contact

PPM exclusive Services GmbH
Via dal Bagn 22
7500 St. Moritz
Switzerland

Office Phone: +41 81 833 02 02
E-Mail: booking@ppmstmoritz.com
www.ppmstmoritz.com