

Apartment Lain Alpin

Pontresina

Facts

- Sleeps: 8 Guests
- Bedrooms: 4
- Bathrooms: 4+1

Services*

- Concierge service
- Daily cleaning
- All linen and utilities
- Wireless internet
- Daily services of a private kitchen chef and a butler can be booked upon request





Description:

Luxurious two-level 4-bedroom apartment Lain Alpin, with spacious living & dining areas, is located inside the impressive building of the historical Parkhotel. The residence originates from the 19th century and has now been transformed into a premium residence made up of a number of freehold apartments.

Apartment Lain Alpin is located in Pontresina, a hidden gem village only a 10-minute drive away from the bustling city center of St. Moritz and Corviglia skiing area. Pontresina has a charming shopping street, little cafes, and excellent restaurant choices. You can escape the busy roads of St. Moritz while still being very close to it at the same time.

The apartment is situated on the ground and lower floors and consists of 4 en-suite bedrooms. The spacious Master bedroom has a comfortable king-size bed, a wonderful bathtub to relax in after a long day on the slopes, a beamer, a gallery with a closet, and a small working desk. The other 3 bedrooms offer beautiful accommodation for the family and friends, all of them ensuite and equipped with flat-screen TVs. There is a TV lounge on the lower level as well.

Lain Alpin has gorgeous and spacious living areas and a fully equipped kitchen. The elegant dining table comfortably sits 12 guests.

The terrace with a fire bowl is the perfect place for sundowners and gives access to the gardens.



Location

Apartment Lain Alpin lies centrally in the idyllic mountain village of Pontresina, with its splendid Engadine buildings flanked by the Bernina massif. It's known for its Belle Epoque hotels and traditional Engadine stone houses with decorated facades. The inhabitants enjoy the complete peace and quiet and the homely atmosphere of the village. The world-famous St. Moritz, with diverse shopping opportunities, restaurants and its exciting way of life, is only a few minutes away.

- Location: Pontresina
- Altitude: 1,805 m
- Moritz Center: 8 km
- Skiing: 5-minute drive
- Airport Samedan: 6 km
- Airport Zurich: 220 km
- Airport Milan: 190 km
- Airport Munich: 395 km

Facilities

- Terrace and access to garden
- 2 underground parking spots
- Laundry room in the residence
- Ski/Bike Room
- Private fitness & sauna at the garage level





Layout:

Main Level:

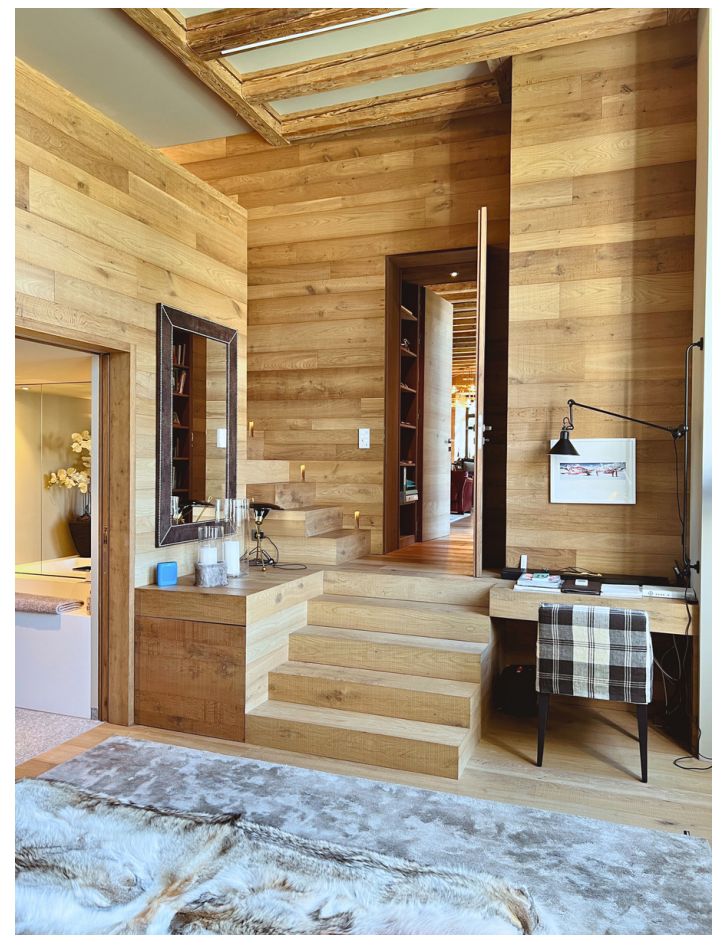
Entrance
 Large Living room with garden & mountain views
 Fireplace (artificial)
 Dining area with table for 12 guests
 Guest WC
 Fully equipped kitchen
 Access to terrace & garden with a firebowl
 Master Bedroom ensuite (king-size bed, beamer, gallery with closet and office desk, bath and shower, double sinks)
 Second Bedroom ensuite (king-size bed, shower only, TV)
 Stairs down to lower level

Lower level:

TV room with large flat screen
 Second entrance to the apartment
 Third Bedroom ensuite (queen-size bed, shower only, TV)
 Fourth Bedroom ensuite (two single beds, shower only, TV)
 All windows on this level are opening to small daylight atriums decorated with local stones

Garage level: private area with fitness & sauna





enjoy the valley
we take care of the rest

Booking Contact

PPM exclusive Services GmbH
Via dal Bagn 22
7500 St. Moritz
Switzerland

Office Phone: +41 81 833 02 02
E-Mail: booking@ppmstmoritz.com
www.ppmstmoritz.com