

Chesa Tuor Brattas

St. Moritz

Facts

- Sleeps: 12 Guests
- Bedrooms: 6
- Bathrooms: 6

Services

- Private chef
- Butler
- Concierge service
- Daily cleaning
- All linen and utilities
- Wireless internet





Description:

Spread across three levels, this magnificent chalet of 550m² boasts a luminous and luxurious interior, offering breathtaking views of both the mountains and the lake. Step onto the terrace on the highest floor and immerse yourself in the stunning panorama that surrounds you. The top floor also features a tastefully decorated open-plan living and dining space, complete with cozy sofas and a fireplace. Adjacent to the primary living area is an exquisite modern kitchen and a luxurious TV room adorned with plush sink-in sofas and a sizable flat-screen TV, as well as a library.

Chesa Tuor Brattas can host up to 12 guests in its six elegantly designed suites. The top floor features the remarkable master suite, which includes a fireplace, a private balcony, a personal study, and a spacious en-suite bathroom equipped with a shower, bathtub, and dressing area. Additionally, there are four more double bedrooms and one twin room, each boasting stylish en-suite bathrooms or showers.



Chesa Tuor Brattas features a compact spa area comprising a sauna and shower, along with a spacious fitness area equipped with a bench press and ample room for yoga or Pilates. Additional amenities encompass a laundry room and two garages, offering four indoor parking spaces and two outdoor spaces.

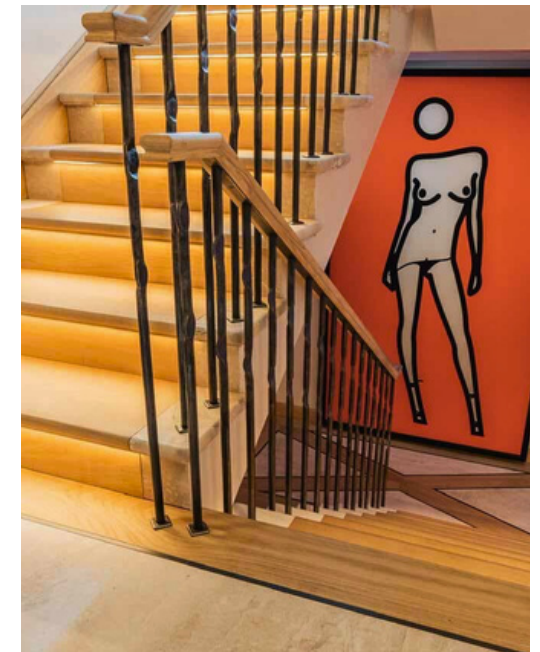
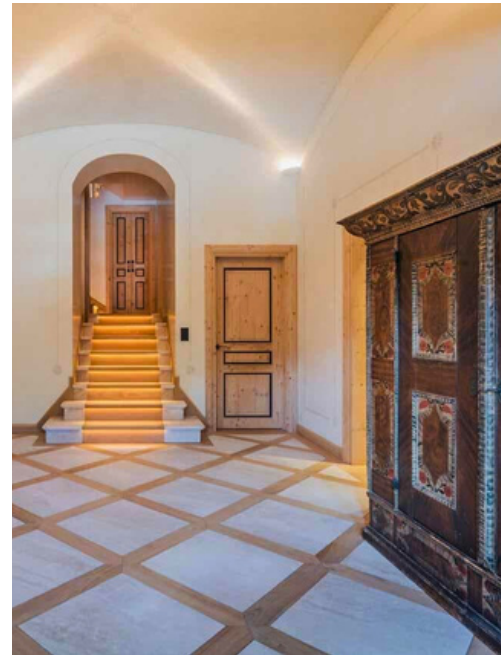
Location

Perfectly situated at the heart of the town, ChesaTuor Brattas enjoys an ideal location for experiencing everything that St. Moritz has to offer. The funicular, providing swift access to the Corviglia ski area, is approximately a 10-minute walk or a two-minute drive from the chalet. Moreover, numerous shops, bars, and restaurants are conveniently within walking distance or a short-drive distance.

- Location: St. Moritz
- Altitude: 1,815 m
- Moritz Center: 500 meters
- Skiing: 10 minutes walking or 2 minutes drive
- Airport Samedan: 7 km
- Airport Zurich: 215 km
- Airport Milan: 190 km
- Airport Munich: 380 km

Facilities

- Sauna & fitness area
- Garage & exterior parking
- Cinema / TV Room
- Ski Room
- Fireplace
- Elevator





Layout:

Lower Ground Level

Ski Room / Garage

Ground Level

Entrance Hall / Garage / Laundry room

First Level

4 double ensuite bedrooms

1 twin ensuite bedroom

Sauna and fitness area

Second Level

Living and dining area with access to a balcony

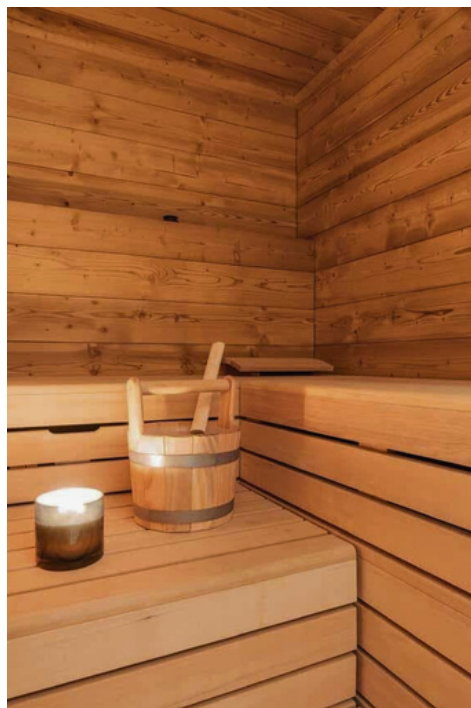
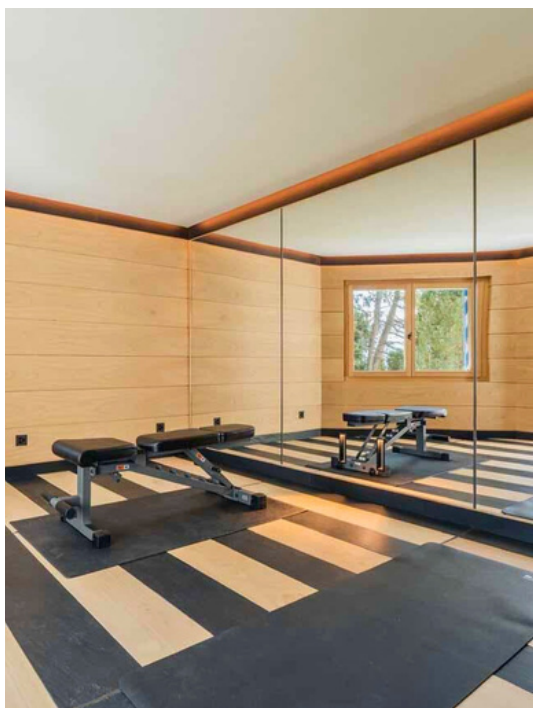
TV/Cinema room

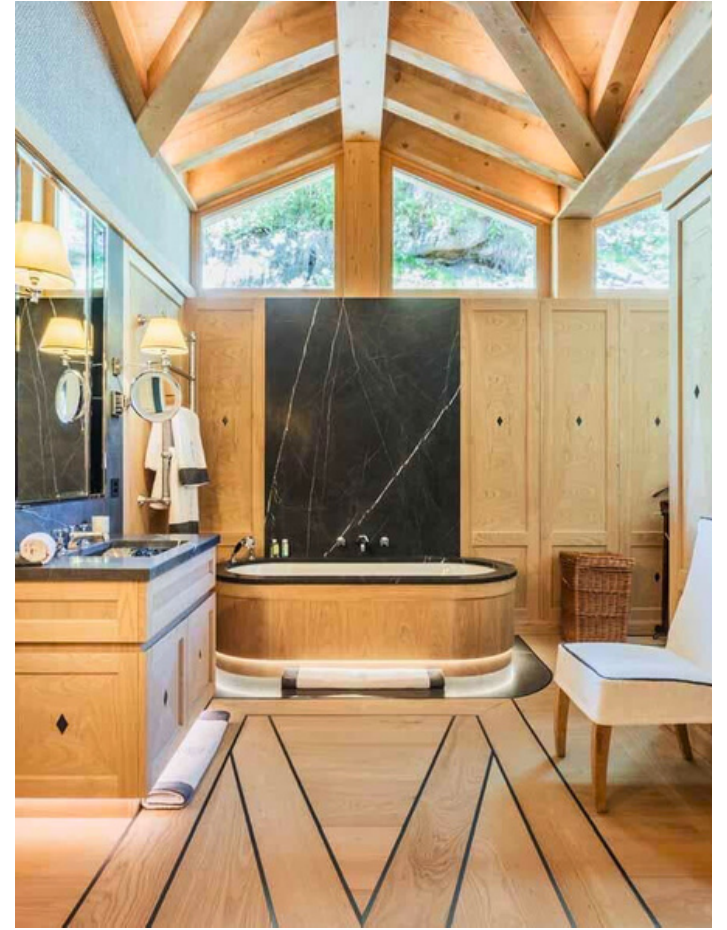
Library

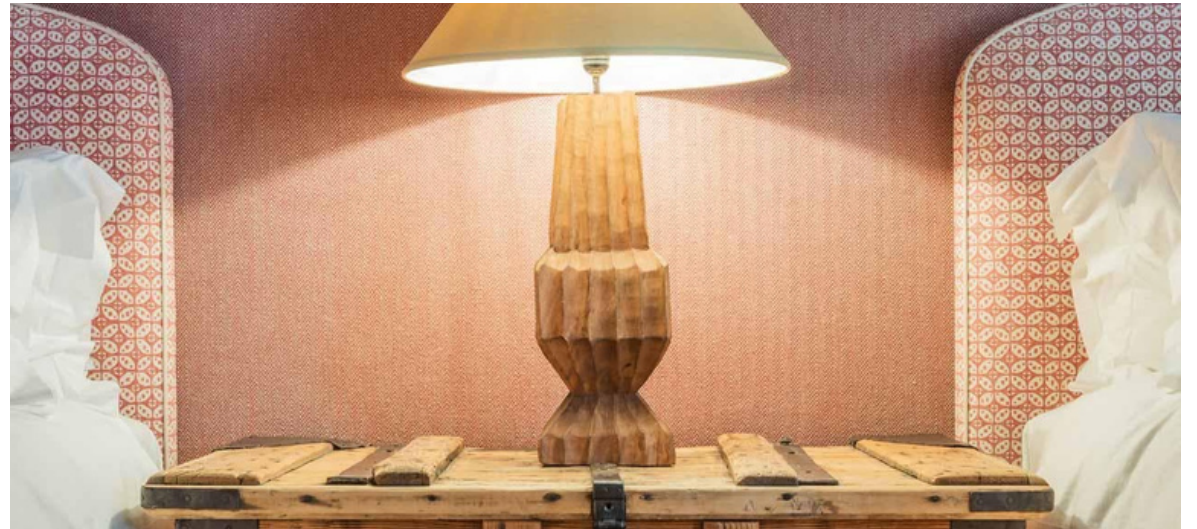
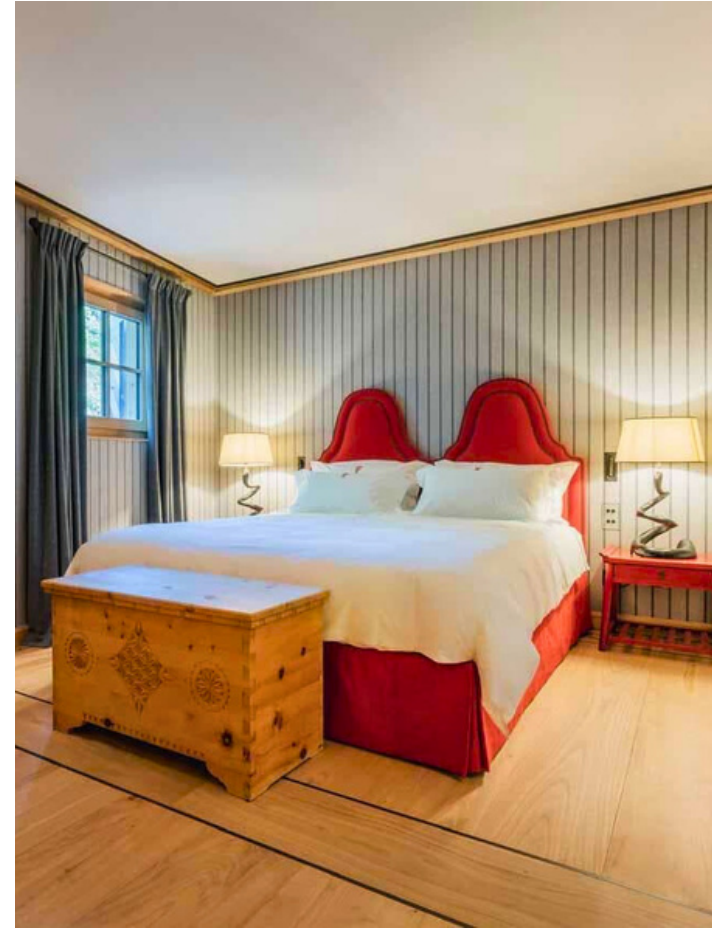
Kitchen

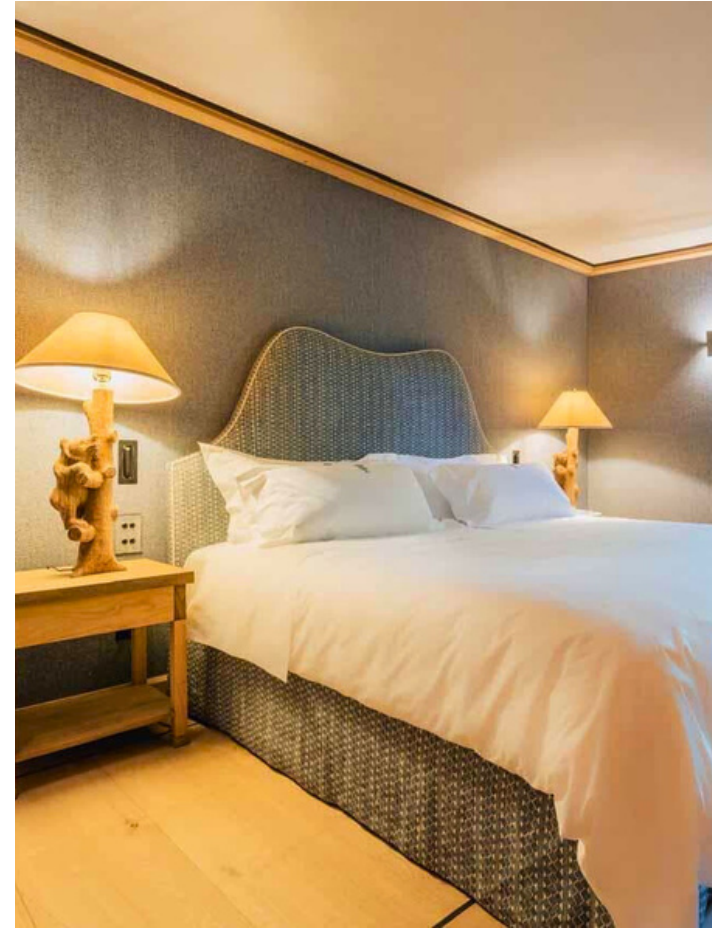
Master bedroom ensuite with a fireplace, dressing area and a balcony

Guest WC

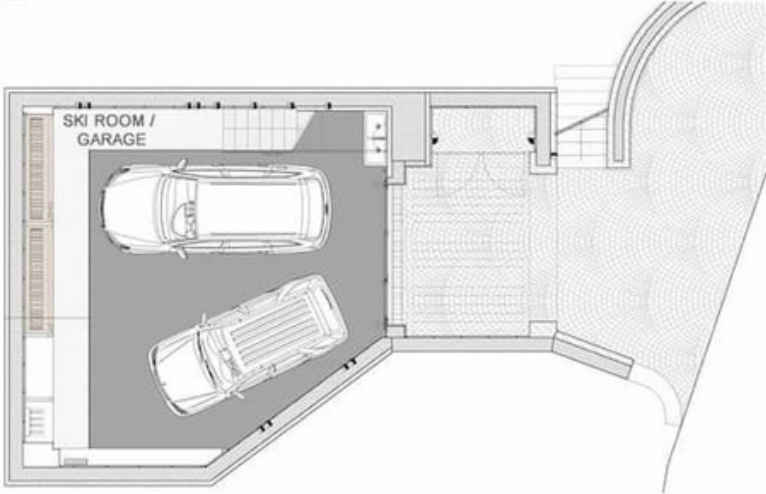
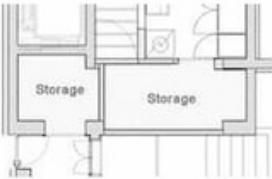




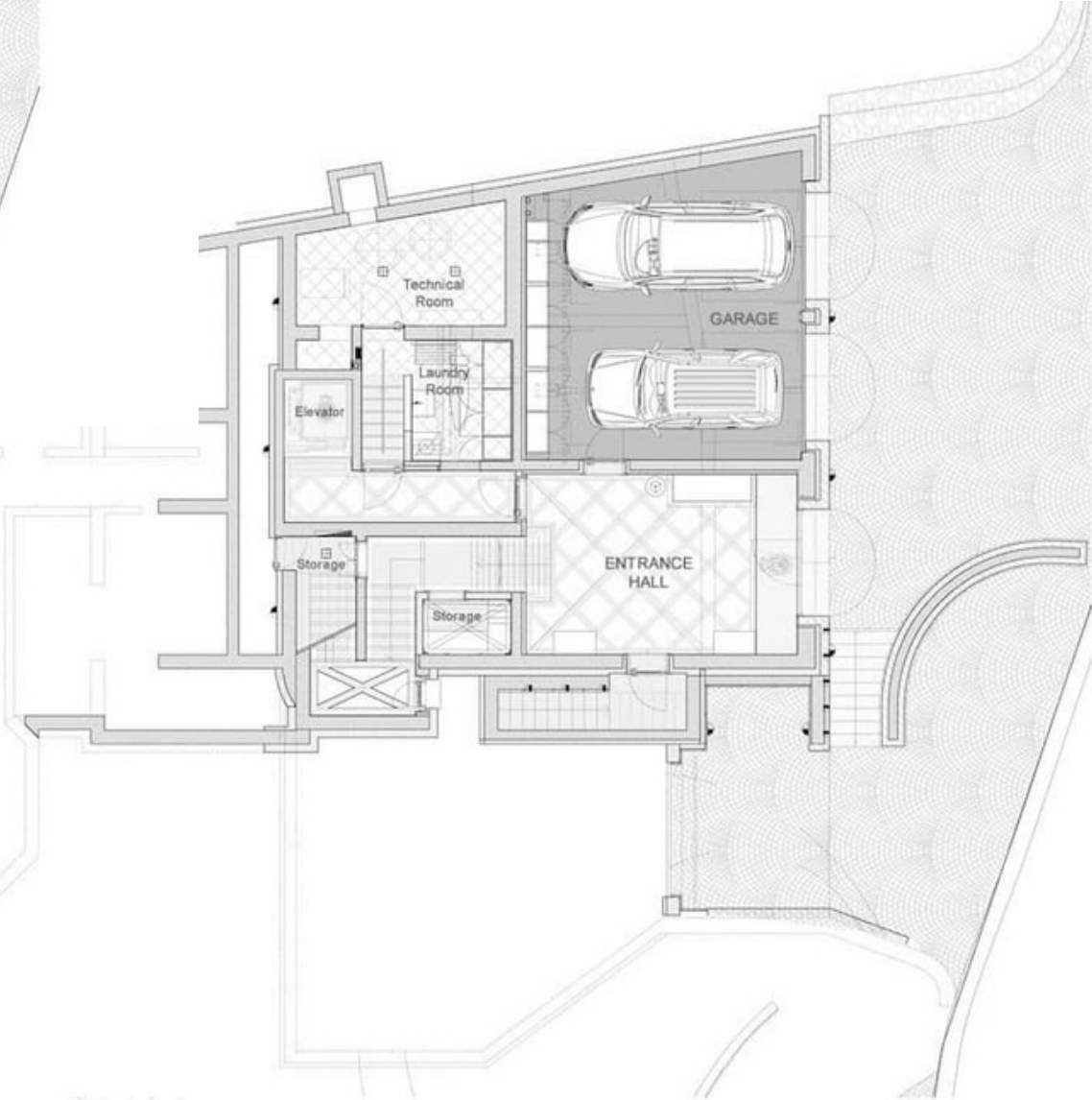




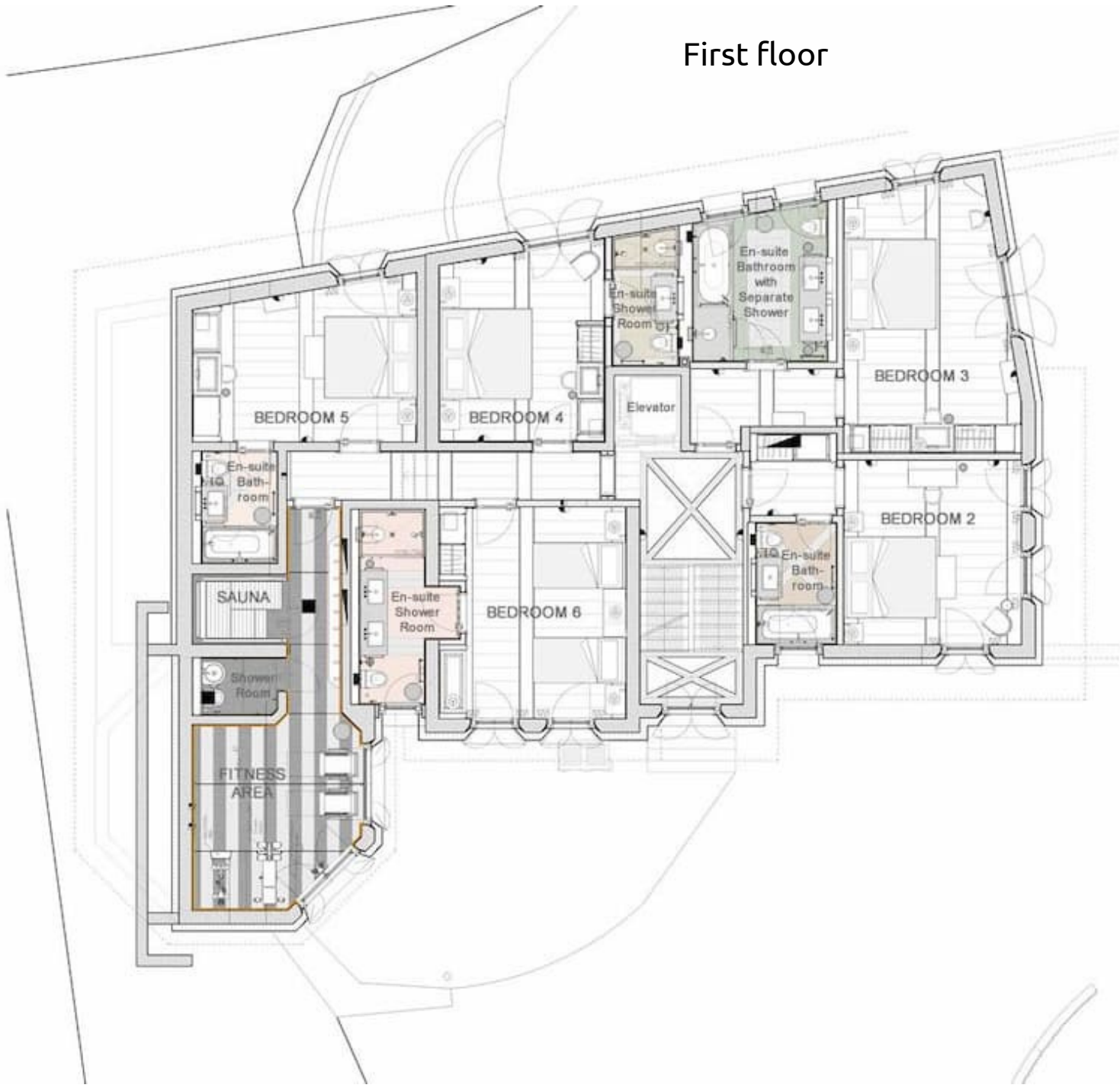
Lower ground floor



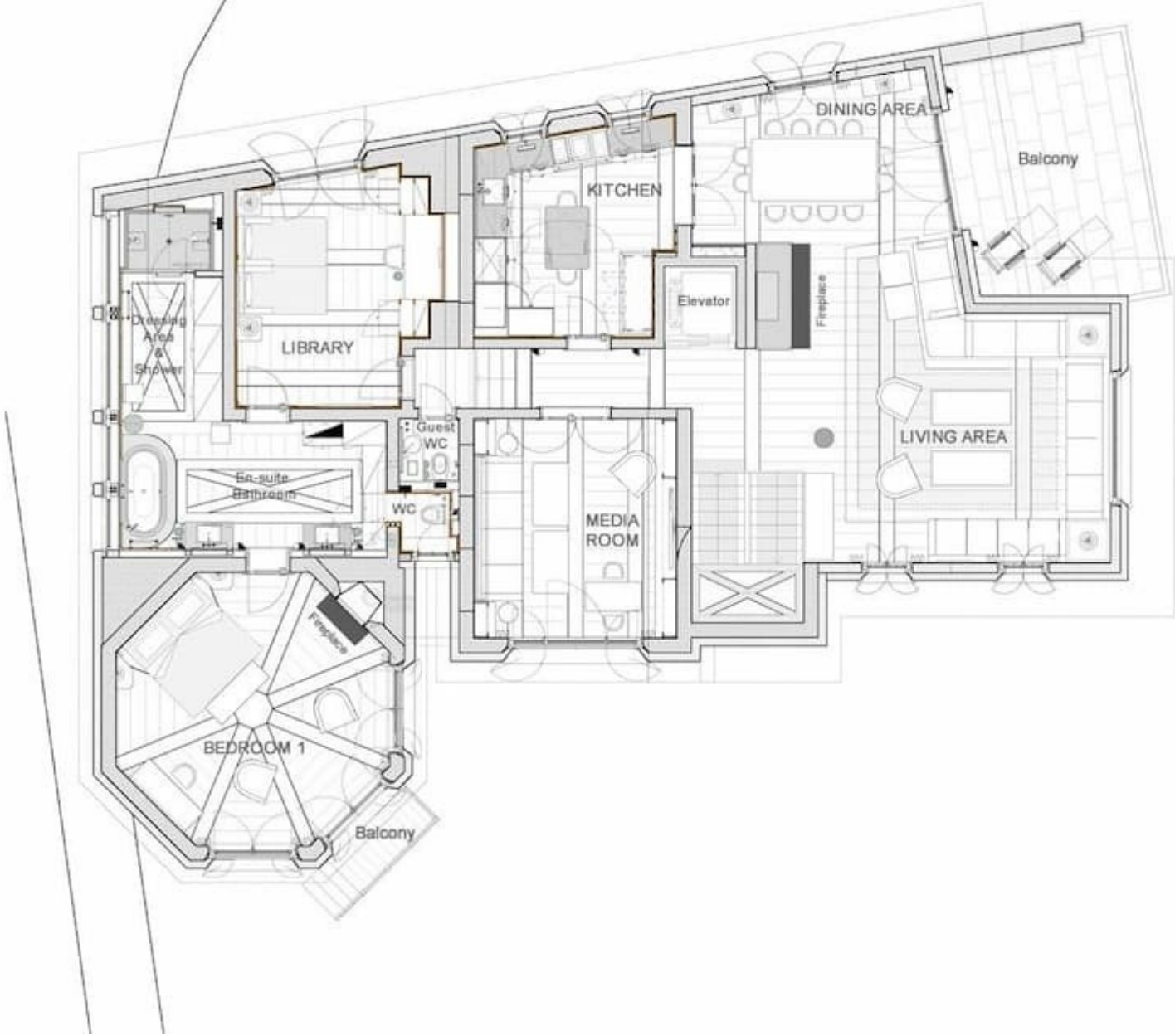
Ground floor



First floor



Second floor



enjoy the valley
we take care of the rest

Booking Contact

PPM exclusive Services GmbH
Via dal Bagn 22
7500 St. Moritz
Switzerland

Office Phone: +41 81 833 02 02
E-Mail: booking@ppmstmoritz.com
www.ppmstmoritz.com