



Peakside Property  
Management

# Chesa Lodola

Pontresina

## Facts

---

- Sleeps: up to 6 guests
- Bedrooms: 3
- Bathrooms: 2 + powder room

## Services\*

---

- Concierge service
- Daily cleaning
- All linen and utilities
- 2 indoor parking spots in neighboring house





## Description

---

Chesa Lodola is a cozy 3 bedroom chalet in the center of Pontresina, stretching over 2.5 floors. It consists of 3 bedrooms and an extensive living room on the lower floor.

On the lower floor, the spacious living room offers a great atmosphere with a fireplace and balcony to soak in the sun after a long day on the slopes.

The kitchen and dining room area is located on the mezzanine level. An extra powder room for guests can be found on this level as well.

The top floor consists of 3 bedrooms and 2 bathrooms. There are 2 double rooms as well as an additional room with 2 bunk beds. Perfect for a family with kids or it can be used as an overflow bedroom.

Chesa Lodola is located in Pontresina, a hidden gem village only a 10 minute drive away from the bustling city center of St. Moritz. Pontresina has a charming shopping street, little cafes and excellent restaurant choices. You can escape the busy roads of St. Moritz while still being very close to it at the same time.

Please find a 3D walkthrough at: [http://bit.ly/chesa\\_lodola](http://bit.ly/chesa_lodola)



## Location

---

Chesa Lodola lies centrally in the idyllic mountain village of Pontresina, with its splendid Engadine buildings flanked by the Bernina massif. It's known for its Belle Epoque hotels and traditional Engadine stone houses with decorated facades. The inhabitants enjoy the complete peace and quiet and the homely atmosphere of the village. The world-famous St. Moritz, with diverse shopping opportunities, restaurants and its exciting way of life, is only a few minutes away.

- **Location:** Pontresina
- **Altitude:** 1805
- **St. Moritz Center:** 8 Km
- **Skiing:** 5 minute drive
- **Airport Samedan:** 6 KM
- **Airport Zurich:** 220 Km
- **Airport Milan:** 190 Km
- **Airport Munich:** 395 Km

## Facilities

---

- Wi-Fi
- Apple TV, Sat/Cable TV







## Layout

---

### Level 1:

Living Room with fireplace  
Balcony

### Mezzanine Level:

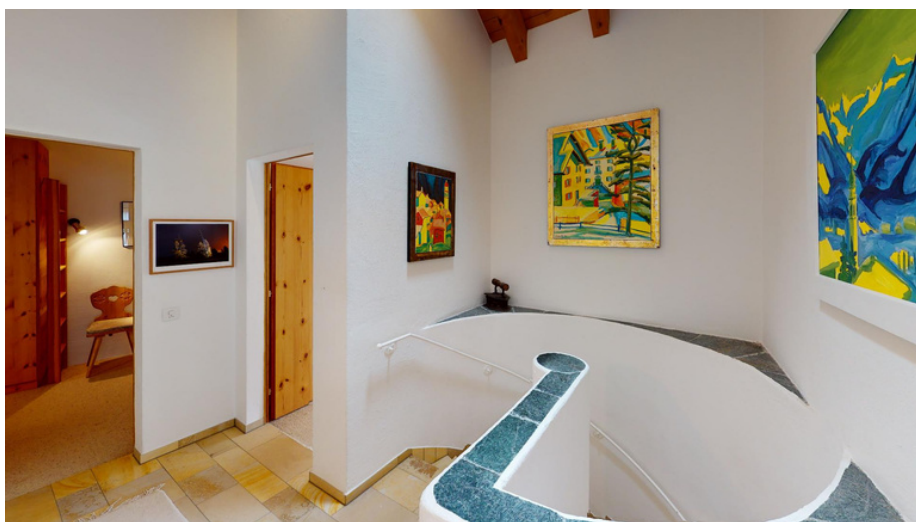
Entrance Area  
Kitchen  
Dining Area  
Powder Room

### Level 2:

Master Bedroom with balcony  
Bedroom 1  
Bedroom 2 with bunk beds  
Bathrooms







enjoy the valley  
we take care of the rest

**Booking Contact**

PPM exclusive Services GmbH  
Via dal Bagn 22  
7500 St. Moritz  
Switzerland

Office Phone: +41 81 833 02 02  
E-Mail: [info@ppmstmoritz.com](mailto:info@ppmstmoritz.com)  
**[www.ppmstmoritz.com](http://www.ppmstmoritz.com)**