

# Chesa Laret

Pontresina

## Facts

---

- Sleeps: up to 12 guests
- Bedrooms: 6
- Bathrooms: 5

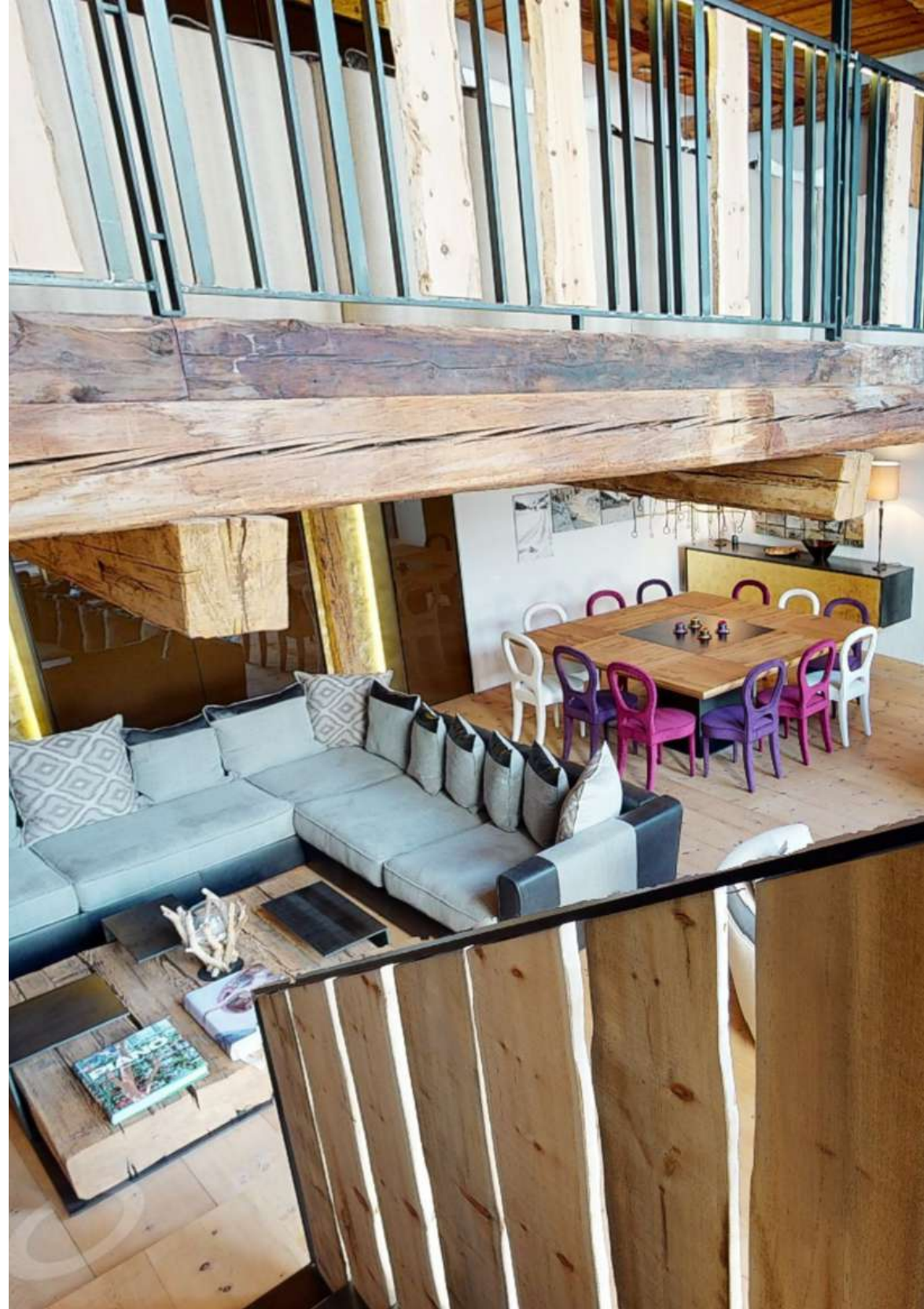
## Services\*

---

- Private chef
- Chalet host/hostess
- Concierge service
- Daily cleaning
- All linen and utilities

\*Chef and host 8h per day (additional hours chef CHF 79, host CHF 69), private concierge service 8am - 10pm.

\*\* food and all beverages (mineral water, tea, coffee, wine, champagne, digestives, aperitifs or any drink who are not included in the prices ) will be charge at local cost + VAT







## Description

---

Chesa Laret is a luxurious 6 bedroom chalet stretching over 5 floors. It consists of 3 apartments combined into one and the whole chalet can be rented. It offers extensive living spaces, beautiful views, a large living room as well as a big entertainment room.

On the second floor, both bedrooms have en-suite bathrooms as well as direct access to the spa and wellness area. Additional 3 bedrooms can be found on the fourth floor. One of them has an en-suite bathroom, the other two share a beautiful bathroom. The Master Bedroom with it's en-suite bathroom is located on the top floor.

The living room and entertainmen area stretch over 2 floors, plenty of room to stretch your legs, enjoy a movie and relax after a fun day of activities.

The chalet has a beautiful wellness area located on the second floor. It includes a sauna, steam room and a fitness room.

Chesa Laret is located in Pontresina, a hidden gem village only a 10 minute drive away from the bustling city center of St. Moritz. Pontresina has a charming shopping street, little cafes and excellent restaurant choices. You can escape the busy roads of St. Moritz while still being very close to it at the same time.

Please find a 3D walkthrough at: [https://bit.ly/Chesa\\_Laret](https://bit.ly/Chesa_Laret)

## Location

---

Chesa Laret lies centrally in the idyllic mountain village of Pontresina, with its splendid Engadine buildings flanked by the Bernina massif. It's known for its Belle Epoque hotels and traditional Engadine stone houses with decorated facades. The inhabitants enjoy the complete peace and quiet and the homely atmosphere of the village. The world-famous St. Moritz, with diverse shopping opportunities, restaurants and its exciting way of life, is only a few minutes away.

- **Location:** Pontresina
- **Altitude:** 1805
- **St. Moritz Center:** 8 Km
- **Skiing:** 5 minute drive
- **Airport Samedan:** 6 KM
- **Airport Zurich:** 220 Km
- **Airport Milan:** 190 Km
- **Airport Munich:** 395 Km

## Facilities

---

- Spa & Wellness area
- Ski Room
- Laundry Room
- Wi-Fi
- Apple TV, Sat/Cable TV







## Layout

---

### Level 1:

- Entrance Hall
- Lounge Room
- Powder Room
- Wine Cellar / Lounge
- Ski Room
- Laundry Room

### Level 2 (Apartment 1):

- Entrance Area
- Bedroom 1 with en-suite bathroom
- Bedroom 2 with en-suite bathroom
- Wellness area
- Fitness Room

### Level 3 (Apartment 2):

- Entrance Area
- Powder Room
- Living Room
- Kitchen
- Fireplace
- Balcony



## Layout

---



### Level 4 (Apartment 3):

Entertainment / Home Cinema Room

Bedroom 3 with shared bathroom

Bedroom 4 with shared bathroom

Bedroom 5 with en-suite bathroom

Additional living room spaces

Balcony

### Level 5:

Master bedroom with en-suite bathroom







enjoy the valley  
we take care of the rest

**Booking Contact**

PPM exclusive Services GmbH  
Via dal Bagn 22  
7500 St. Moritz  
Switzerland

Office Phone: +41 81 833 02 02  
E-Mail: [info@ppmstmoritz.com](mailto:info@ppmstmoritz.com)  
[www.ppmstmoritz.com](http://www.ppmstmoritz.com)

