

# Chesa Goodmountain

## Samedan

### Facts

---

- Sleeps: up to 10 guests
- Bedrooms: 5
- Bathrooms: 5

### Services\*

---

- Private chef
- Chalet host/hostess
- Concierge service
- Daily cleaning
- All linen and utilities

\*Chef and host 8h per day (additional hours chef CHF 79, host CHF 69), private concierge service 8am - 10pm.

\*\* food and all beverages (mineral water, tea, coffee, wine, champagne, digestives, aperitifs or any drink who are not included in the prices ) will be charge at local cost + VAT







## Description

Chesa Goodmountain is a luxurious 5 bedroom chalet stretching over 4 floors. It consists of a beautiful Master bedroom and additional 4 double bedrooms.

3 double bedrooms are located on the second floor. All rooms come with en-suite bathrooms. After a long day on the slopes, our guests can relax in the spa area which is equipped with a sauna, jacuzzi and steam room.

The third floor consists of a large living room with and adjoined kitchen and dining area. It also includes another bedroom with an en-suite bathroom.

The Master bedroom with its en-suite bathroom is located on the top floor of the chalet and includes a state of the art free standing bath tub.

Chesa Goodmountain is located on the hillside above the idyllic village of Samedan, a hidden gem village only a 10 minute drive away from the bustling city center of St. Moritz. The vital Upper Engadine's main city is the cradle of Engadine's way of life. Samedan is important thanks to its location in the heart of the Upper Engadine: the village is the turning point and pivot of the Rhaetian Railway and the home of a small international airport.

Please find a 3D walkthrough at:  
[http://bit.ly/Chesa\\_Goodmountain](http://bit.ly/Chesa_Goodmountain)





## Location

---

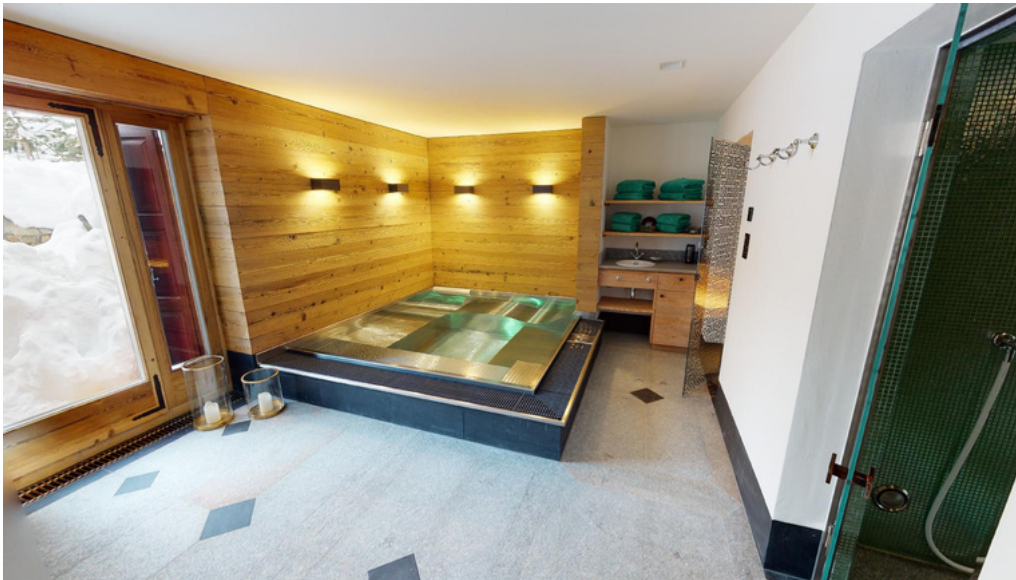
Chesa Goodmountain lies on the hillside above the idyllic mountain village of Samedan. In the village center tradition-rich rows of houses with their Sgraffito offer good photo opportunities and subjects for picture postcards. The pistes around the Survii Skilift attract many. Thanks to well-built train and bus connections the rest of the ski areas of the region are easily and quickly reached. The cross-country skiing center is recommended for excursions on idyllic cross-country ski runs. On Muottas Muragl one can undertake superb hikes.

Europe's highest lying airport is the starting point for spectacular round trip flights in the Engadine mountain world. The world-famous St. Moritz, with diverse shopping opportunities, restaurants and its exciting way of life, is only a few minutes away.

- **Location:** Samedan
- **Altitude:** 1721
- **St. Moritz Center:** 7 Km
- **Skiing:** 7 minute drive
- **Airport Samedan:** 1 Km
- **Airport Zurich:** 220 Km
- **Airport Milan:** 194 Km
- **Airport Munich:** 329 Km







## Layout

---

### Level 1:

Entrance Hall

### Level 2:

Entrance Hall & Foyer

Bedroom 1 with en-suite bathroom

Bedroom 2 with en-suite bathroom

Bedroom 3 with en-suite bathroom

Spa Area

### Level 3:

Living Room

Dining Area

Kitchen

Bedroom 4 with en-suite bathroom

### Level 4:

Master bedroom with en-suite bathroom

Office

## Facilities

---

- Sauna
- Whirlpool
- Steam Room
- Wi-Fi
- Apple TV, Sat/Cable TV







enjoy the valley  
we take care of the rest

**Booking Contact**

PPM exclusive Services GmbH  
Via dal Bagn 22  
7500 St. Moritz  
Switzerland

Office Phone: +41 81 833 02 02  
E-Mail: [info@ppmstmoritz.com](mailto:info@ppmstmoritz.com)  
**[www.ppmstmoritz.com](http://www.ppmstmoritz.com)**