

Chesa Rayo del Sol

St. Moritz - Suvretta

Facts

- Sleeps: 9 guests
- Bedrooms: 5
- Bathrooms: 5

Services*

- Concierge service
- Daily cleaning
- All linen and utilities
- Wireless internet
- Bath products
- Hairdryer(s)

* Private chef and chalet host can be booked separately upon request





Description:

Unique design, ideal for families

Located in the Suvretta area, St. Moritz's exclusive chalet neighbourhood, you find yourself in a quiet place in the middle of the forest. Situated only five minutes from town by car you are close to shops, restaurants and nightclubs. The ski slopes are within walking distance from the chalet.

Recently refurbished, this chalet combines traditional materials with a more contemporary style. Upon entering, to the right you will find the beautiful, cosy living room with its open fireplace. From here you reach the beautifully decorated, spacious dining room with access to the terrace. On the other side of the hallway is the homely, fully equipped kitchen. Following stairs down you will find a sauna a fitness room as well as the ski storage room and a garage.

Up to nine guests can sleep peacefully in five beautiful bedrooms. On the upper level is the master, double bedroom as well as another double bedroom. On the entrance level is a double bedroom and on the lower floor a twin bedroom and a single bedroom. All the rooms have designer en suite bathrooms giving this very special place an edge.

Ideal for children and families the chalet has a great outside area for playing or sledging.



Location

Located in the chic Suvretta area of St. Moritz, Chesa Panorama offers breathtaking panoramic views over the engadin valley and the surrounding mountain landscape. The area is known for its beautiful chalets and villas in quiet surroundings, while finding itself a mere three-minute drive from the lively town center with its exquisite restaurants, bars, and luxury shops.

The Corviglia ski area can easily be reached via the Suvretta chair lift a little further down the road.

Location:	St. Moritz
Altitude:	1800
St. Moritz Center:	2.5 km
Skiing:	7 minutes walking
Airport Samedan:	9 km
Airport Zurich:	207 km
Airport Milan:	186 km
Airport Munich:	317 km

Facilities

- Fireplace
- Flatscreen TV
- Wi-Fi
- Parking garage
- Garden terrace
- Ski storage
- Laundry room
- Sauna





Layout

UPPER LEVEL:

BR1: Master, double bed, en suite bathroom

BR2: Double bed, en suite bathroom

ENTRANCE LEVEL:

Living room, fireplace, terrace access Dining room

Equipped kitchen

BR3: Double bed, en suite bathroom

LOWER LEVEL:

Garage, ski storage

Sauna, fitness room

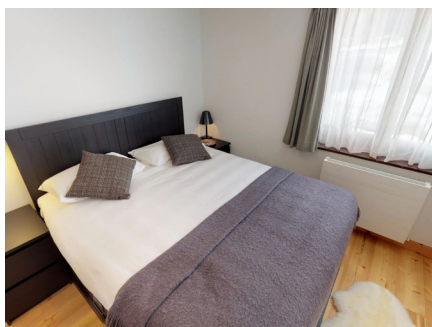
BR4: Double bed, en suite bathroom

BR5: Single bed, en suite bathroom

Virtual Tour

Take a virtual tour of the property:

<https://my.matterport.com/show/?m=hDKkeo65L-tF&brand=0>



enjoy the valley
we take care of the rest

Booking Contact

PPM exclusive Services GmbH
Via dal Bagn 22
7500 St. Moritz
Switzerland

Office Phone: +41 81 833 02 02
E-Mail: info@ppmstmoritz.com
www.ppmstmoritz.com