

Apartment Snow Garden St. Moritz Center

Facts

- Sleeps: 6 + 2 guests
- Bedrooms: 3 + 1
- Bathrooms: 4

Services*

- Concierge service
- Daily cleaning
- All linen and utilities
- Wireless internet
- Bath products
- Hairdryer(s)

* Private chef and chalet host can be booked separately upon request



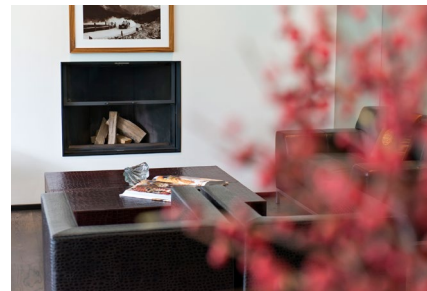


Description:

Contemporary style apartment with lake view terrace

Located in the most exclusive area of St. Moritz, right next to the infamous Badrutt's Palace Hotel, this gorgeous apartment has a stunning ground floor terrace with lake- and mountain views. Situated only 5 minutes walk from town, the location is both central and highly private.

The contemporary style, which has a slightly Asian resemblance, immediately stands out upon entering the apartment. Unique walls in the open plan living and dining area and dark wooden flooring throughout the entire apartment perfectly complement the distinct decor. A beautiful wooden dining table comfortably seats up to 8 guests in a bright setting with plenty of natural light through floor to ceiling windows. Comfortable leather sofas, the finest Bang & Olufsen sound system and a cozy fireplace make the living room very welcoming.



The four bedrooms (three with double beds, one equipped with a sofa bed) with their en-suite marble bathrooms are wonderfully luxurious. All bathrooms are fitted with a bath tub and spacious shower, while the master bathroom offers the added luxury of a steam bath.

The terrace lets you enjoy the beautiful views over the lake of St. Moritz and the breath-taking surrounding mountains.



There is private indoor parking with one available garage parking space.

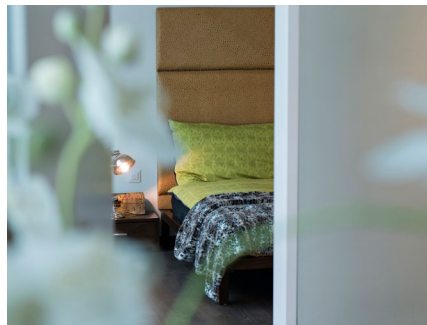
Location

Located just 100 meters off the main shopping street of St. Moritz, the apartment building finds itself in a quiet location overlooking the beautiful mountain scenery and Lake St. Moritz. A private driveway leading away from the main street to the house, provides perfect privacy while staying in the center of the action.

The Corviglia ski area can easily be reached via the Chantarella funicular, only about 7 minutes walking distance from the Apartment. Public transport is included in the ski pass ticket and runs directly outside the property at the main street.

Numerous high end boutiques, gourmet restaurants and nightlife spots are found only a stone's throw away.

Location:	St. Moritz
Altitude:	1800
St. Moritz Center:	100 Meters
Skiing:	7 minutes walking
Airport Samedan:	7 Km
Airport Zurich:	208 Km
Airport Milan:	187 Km
Airport Munich:	315 Km





Facilities

- Fireplace
- Flatscreen TV
- Wi-Fi
- Garden terrace
- Storage room
- Steam bath
- Indoor parking

Layout

Open-plan living area: fireplace, TV corner dining area, terrace access, open-plan kitchen, mirrored hallway, guest WC

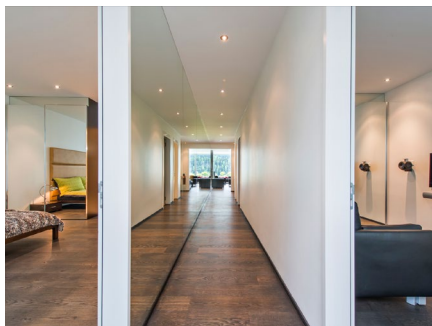
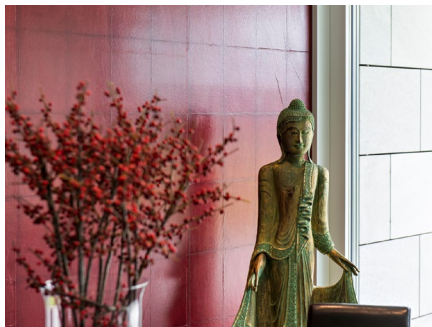
BR1: Master, king size bed, en-suite bathroom (hot tub, steam bath, shower), atrium access

BR2: King size bed, en-suite bathroom (hot tub, shower), atrium access

BR3: King size bed, en-suite bathroom (hot tub, shower)

BR4: Sofa bed, en-suite bathroom (hot tub, shower)

Outdoors: Terrace, garden, covered parking



Virtual Tour

Take a virtual tour of the property:

<https://my.matterport.com/show/?m=SFYop9sYsJW>

enjoy the valley
we take care of the rest

Booking Contact

PPM exclusive Services GmbH
Via dal Bagn 22
7500 St. Moritz
Switzerland

Office Phone: +41 81 833 02 02
E-Mail: info@ppmstmoritz.com
www.ppmstmoritz.com