

## Apartment Lakeside St. Moritz Center

### Facts

---

- Sleeps: 6 guests
- Bedrooms: 3
- Bathrooms: 3

### Services

---

- Private chef
- Chalet host/hostess
- Concierge service
- Daily cleaning
- All linen and utilities
- Wireless internet
- Bath products
- Hairdryer(s)

\* Chef and host 8h per day (additional hours chef CHF 79, host CHF 69), private concierge service 8am - 10pm.

\*\* food and all beverages (mineral water, tea, coffee, wine, champagne, digestives, aperitifs or any drink who are not included in the prices ) will be charge at local cost + VAT





## Description:

### Picture perfect apartment

Located in a high-end residence building in a prime location next to the Badrutt's Palace Hotel and close to the town center of St. Moritz, this stylish luxury apartment offers amazing views over the

Lake St. Moritz. Exclusive boutiques, luxury shopping and exquisite restaurants are all located in walking distance from the apartment and also the ski slopes are only few minutes away.

The three-bedroom apartment is furnished with modern, high quality materials and close attention to detail. Some exquisite art pieces and a grand piano make for a sophisticated atmosphere.

A spacious dining area comfortably seats up to 10 guests, The adjacent is fully equipped with state-of-the-art facilities and tools. The adjoining living room, equipped with large comfortable sofas, features not only one, but two fireplaces for cozy evenings at home after a day spent skiing on the slopes.

Two King and one queen size bedrooms each come with flatscreen TV and en-suite marble bathrooms. The master bedroom has the added luxury of a home cinema theatre and a Jacuzzi.

The spacious terrace faces the lake and makes for the perfect place to enjoy the sun on one of the sunbeds provided or to host a reception or even lunch or dine outside at a table seating up to six guests.

There is private indoor parking with one available garage parking space.





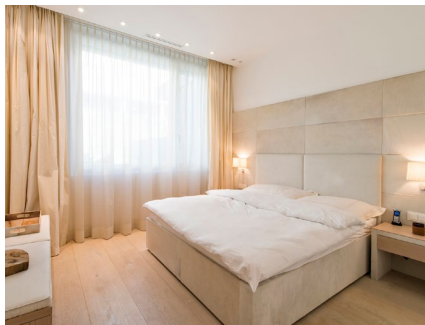
## Location

Located just 100 meters off the main shopping street of St. Moritz, the apartment building finds itself in a quiet location overlooking the beautiful mountain scenery and Lake St. Moritz. A private driveway leading away from the main street to the house, provides perfect privacy while staying in the center of the action.

The Corviglia ski area can easily be reached via the Chantarella funicular, only about 7 minutes walking distance from the Apartment. Public transport is included in the ski pass ticket and runs directly outside the property at the main street.

Numerous high end boutiques, gourmet restaurants and nightlife spots are found only a stone's throw away.

<b>Location:</b>	St. Moritz
<b>Altitude:</b>	1800
<b>St. Moritz Center:</b>	100 Meters
<b>Skiing:</b>	7 minutes walking
<b>Airport Samedan:</b>	7 Km
<b>Airport Zurich:</b>	208 Km
<b>Airport Milan:</b>	187 Km
<b>Airport Munich:</b>	315 Km





## Facilities

- Fireplace
- Flatscreen TV
- Wi-Fi
- Garden terrace
- Storage room
- Jacuzzi
- Indoor parking

## Layout

**Living area:** two lounge areas, piano, dining area (seats 10), office area, fire place, terrace access, Fully equipped kitchen

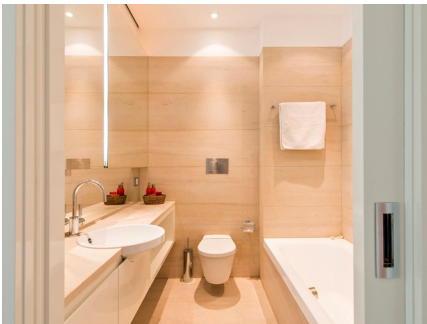
Guest WC

**BR1:** Master bedroom, king-size bed, en suite bathroom (Jacuzzi, shower), garden view

**BR2:** King-size bed, en suite bathroom (shower)

**BR3:** Queen-size bed, en suite bathroom (shower), inner courtyard access

**Outdoors:** Terrace dining setting, sun loungers  
Covered parking



## Virtual Tour

Take a virtual tour of the property:

<https://my.matterport.com/show/?m=7k24NpddKkE>

enjoy the valley  
we take care of the rest

#### **Booking Contact**

PPM exclusive Services GmbH  
Via dal Bagn 22  
7500 St. Moritz  
Switzerland

Office Phone: +41 81 833 02 02  
E-Mail: [info@ppmstmoritz.com](mailto:info@ppmstmoritz.com)  
[www.ppmstmoritz.com](http://www.ppmstmoritz.com)