

The Loft

St. Moritz Center

Facts

- Sleeps: 6 - 8 guests
- Bedrooms: 4
- Bathrooms: 3

Services

- Private chef
- Chalet host/hostess
- Concierge service
- Daily cleaning
- All linen and utilities
- Wireless internet
- Bath products
- Hairdryer(s)

* Chef and host 8h per day (additional hours chef CHF 79, host CHF 69), private concierge service 8am - 10pm.

** food and all beverages (mineral water, tea, coffee, wine, champagne, digestives, aperitifs or any drink who are not included in the prices) will be charge at local cost + VAT





Description:

Modern living at its best

Above the shore of Lake St.Moritz this amazing, modern apartment offers stunning views of the valley and mountains. Only 100 metres from the centre of town, you can walk to the best restaurants, clubs, shops and ski slopes. The private jet airport in Samedan is just a ten minute drive away.

This apartment is in a private residence, which is located right next to the Palace Hotel. It offers luxury throughout every room, high quality materials, designer furniture and large windows make you feel at home.

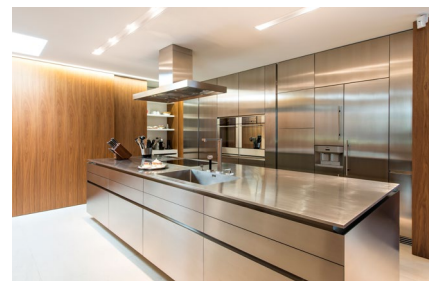
The welcoming living room offers many seating opportunities for reading and relaxing. The dining room has space for ten guests and it adjoins to a complete equipped kitchen. You can relax and enjoy the views on the large terrace after a day of skiing or hiking.



The spacious master bedroom includes an en-suite bathroom with jacuzzi, a rain shower for two and relaxation beds. The other three bedrooms each have en-suite bathrooms with hot tub and shower.

Two private entrances lead to this apartment and there is space for two cars in the garage.

The kids` playroom has a single bed.



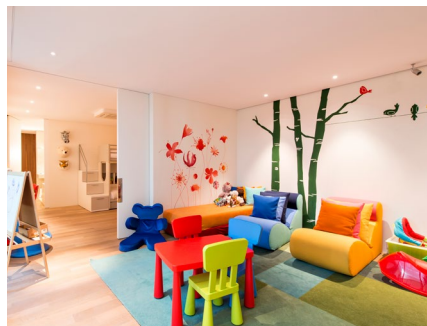
Location

Located just 100 meters off the main shopping street of St. Moritz, the apartment building finds itself in a quiet location overlooking the beautiful mountain scenery and Lake St. Moritz. A private driveway leading away from the main street to the house, provides perfect privacy while staying in the center of the action.

The Corviglia ski area can easily be reached via the Chantarella funicular, only about 7 minutes walking distance from the Apartment. Public transport is included in the ski pass ticket and runs directly outside the property at the main street.

Numerous high end boutiques, gourmet restaurants and nightlife spots are found only a stone's throw away.

Location:	St. Moritz
Altitude:	1800
St. Moritz Center:	100 Meters
Skiing:	7 minutes walking
Airport Samedan:	7 Km
Airport Zurich:	208 Km
Airport Milan:	187 Km
Airport Munich:	315 Km





Facilities

- Fireplace
- Flatscreen TV
- Wi-Fi
- Kid's playroom
- Garden terrace
- Storage room
- Jacuzzi
- Indoor parking

Layout

Living area: fireplace sitting area, viewing area, central lounge area, terrace access Dining room (seats 10), inner courtyard access

Modern kitchen, breakfast area

BR1: Master bedroom, double bed, en suite bathroom (Jacuzzi, two relaxation beds, ceiling double shower), garden view

BR2: Double bedroom, en suite bathroom (hot tub, shower), inner courtyard access

BR3: Double bedroom, en suite bathroom (hot tub, shower), inner courtyard access

BR4: Kids' room, single bed, en suite bathroom, slide-door divider: play area, single bed, inner courtyard access

Outdoors: Garden, terrace
Covered parking (2)



enjoy the valley
we take care of the rest



Booking Contact

PPM exclusive Services GmbH
Via dal Bagn 22
7500 St. Moritz
Switzerland

Office Phone: +41 81 833 02 02
E-Mail: info@ppmstmoritz.com
www.ppmstmoritz.com