

Chesa Corvatsch

Silvaplana - Surlej

Facts

- Sleeps: 12 - 20 guests
- Bedrooms: 8
- Bathrooms: 8

Services

- Private chef
- Chalet host/hostess
- Concierge service
- Daily cleaning
- All linen and utilities
- Wireless internet
- Bath products
- Hairdryer(s)

* Chef and host 8h per day (additional hours chef CHF 79, host CHF 69), private concierge service 8am - 10pm.

** food and all beverages (mineral water, tea, coffee, wine, champagne, digestives, aperitifs or any drink who are not included in the prices) will be charge at local cost + VAT





Description:

Beautiful winter chalet with African touch

This beautiful ski-in chalet is located in the town of Surlej, which is only a 10 minute drive away from St. Moritz. It is situated 100 metres from the Corvatsch ski area and excellent restaurants and sport opportunities are nearby. This chalet style property with an african touch offers wonderful views of the surrounding mountains and generous space for you and your family and friends.

The top floor consists of a fully equipped kitchen and a dining room that seats up to 12 guests, as well as a cozy living room and tv corner under the rooftop.

The entrance level offers a second living room with a playcorner for children, an inviting fireplace and a dining corner with another kitchen.

As well as a double room with en-suite bathroom and the master bedroom with two en-suite bathrooms, one with a shower and the other offering a hot tub.

On the lowest level there are four more double rooms, each with its own bathroom as well as two childrens bedrooms with four bunk beds each and their own bathrooms.

The greatest part about this floor is the swimming pool, sauna and a gym. There is also a skiroom and a parking garage.



Location

Located at the foot of Corvatsch ski area, this beautiful chalet is the perfect starting point for any snowsport enthusiast. Only a few steps away from the gondola, some of the best skiing in all of the Alps is right at the doorstep of this property. And returning from the mountain one can even ski all the way to the property given the right snow conditions.

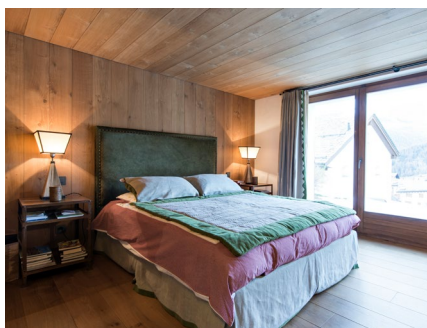
The picturesque town of Surlej is located right at Lake Silvaplana, a perfect spot for watersports during summer or snow-kiting in winter. With a little luck, one might even be able to ice-skate on the frozen lake.

The glamorous town center of St. Moritz with all its gourmet restaurants, high-end shops and vivid nightlife is only a 7 minute drive away.

Location:	Silvaplana - Surlej
Altitude:	1800
St. Moritz:	6 Km
Skiing:	5 minutes walking
Airport Samedan:	13 Km
Airport Zurich:	206 Km
Airport Milan:	183 Km
Airport Munich:	321 Km

Facilities

- Flatscreen TV
- Wi-Fi
- Parking garage
- Garden
- Private spa
- Swimming pool
- Ski room
- Laundry room





Layout

TOP FLOOR:

Living room, vaulted ceiling, balcony access, TV corner
 Dining room (seats 12), vaulted ceiling
 Fully equipped kitchen

GROUND FLOOR:

Entrance hall
 Living area, fireplace, dining corner, kids' play area,
 second fully equipped kitchen
BR1: Master bedroom, double bed, en suite bathrooms, en suite shower room, terrace access
BR2: Double bed, en suite bathroom

LOWER GROUND FLOOR:

Wellness area: long indoor swimming pool, relaxation area, sauna, small gym, shower
BR3: Double bed, en suite shower room
BR4: Double bed, en suite shower room
BR5: Queen size bed, en suite shower room
BR6: Twin beds, en suite shower room
BR7: Two bunk beds, en suite bathroom (sleeps 4)
BR8: Two bunk beds, en suite shower room (sleeps 4)
 Long hallway leads to: Ski room and garage (4 spaces)

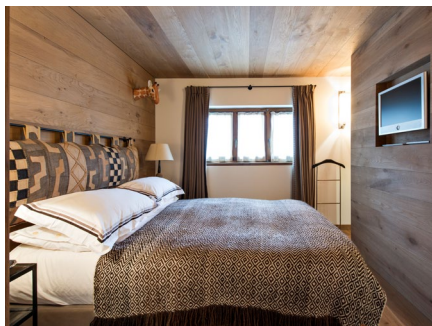
OUTDOORS:

Terrace
 Garden

Virtual Tour

Take a virtual tour of the property:

<https://my.matterport.com/show/?m=Hnt2b1E671A>



enjoy the valley
we take care of the rest



Booking Contact

PPM exclusive Services GmbH
Via dal Bagn 22
7500 St. Moritz
Switzerland

Office Phone: +41 81 833 02 02
E-Mail: info@ppmstmoritz.com
www.ppmstmoritz.com